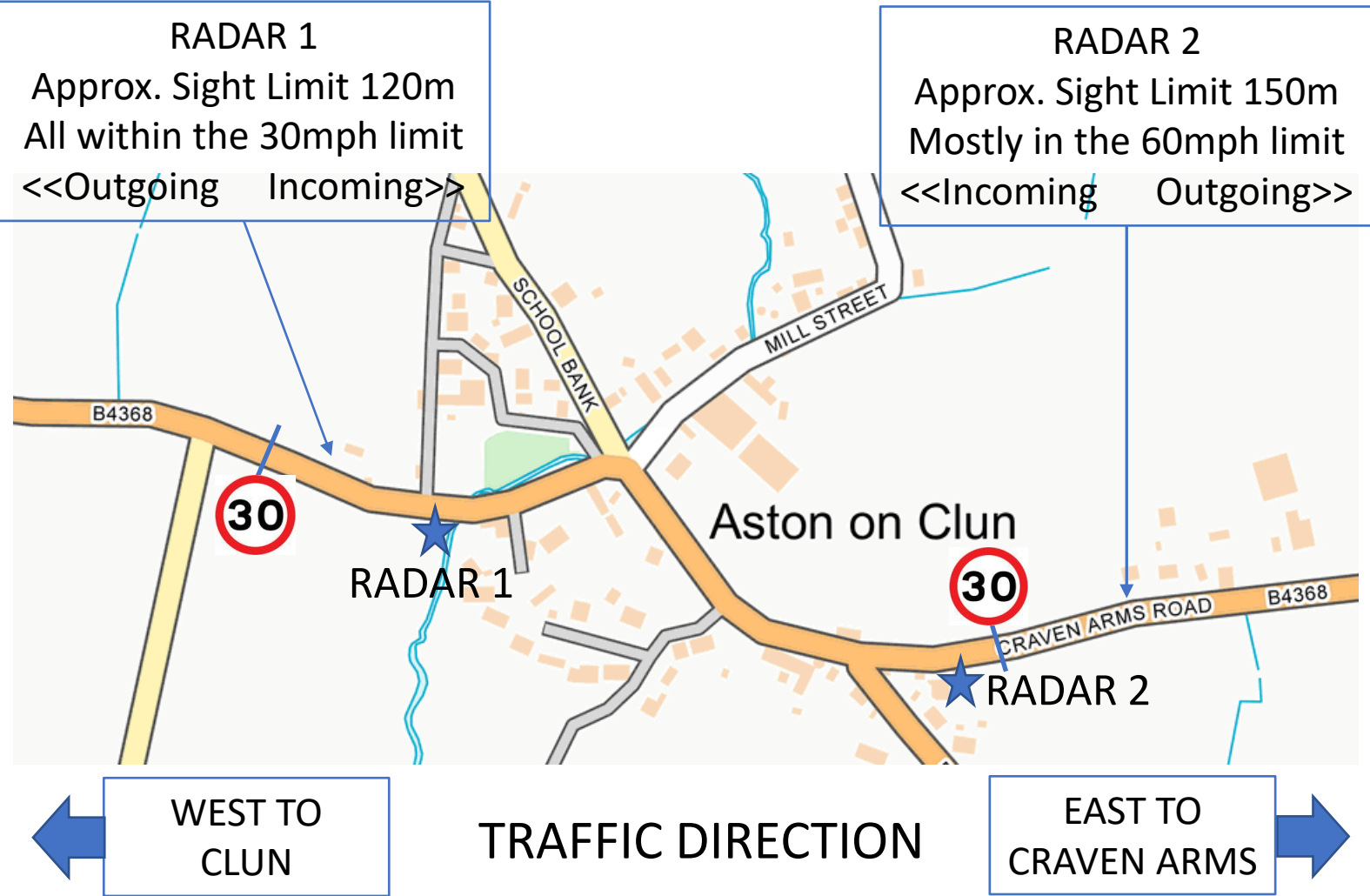




# Speed Indicator Devices (SID)



This Year (11/23-04/24) V Last Year (11/22-04/23)



# Overall Traffic Volume Percentage Change TY v LY



GOING  
WEST

SID  
SIDE

GOING  
EAST

+9.6%

TO

CLUN

FROM

+8.9%

+9.0%

FROM

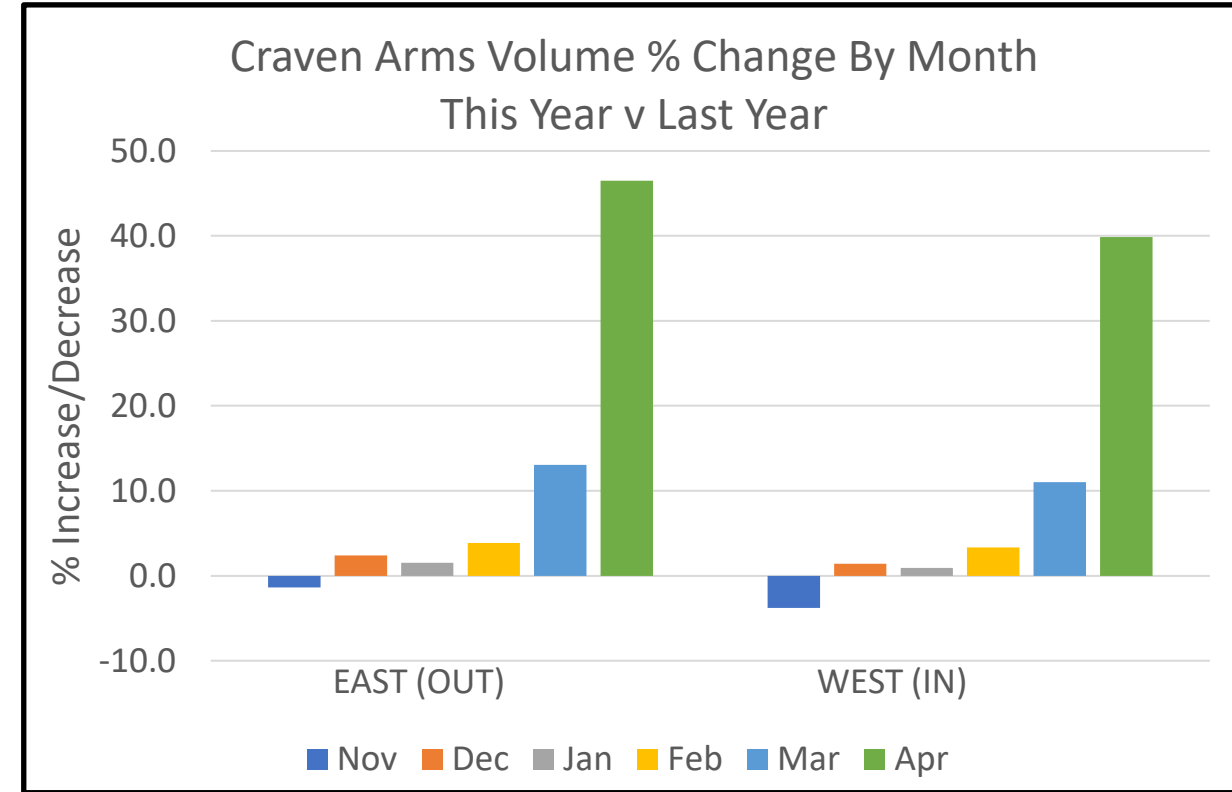
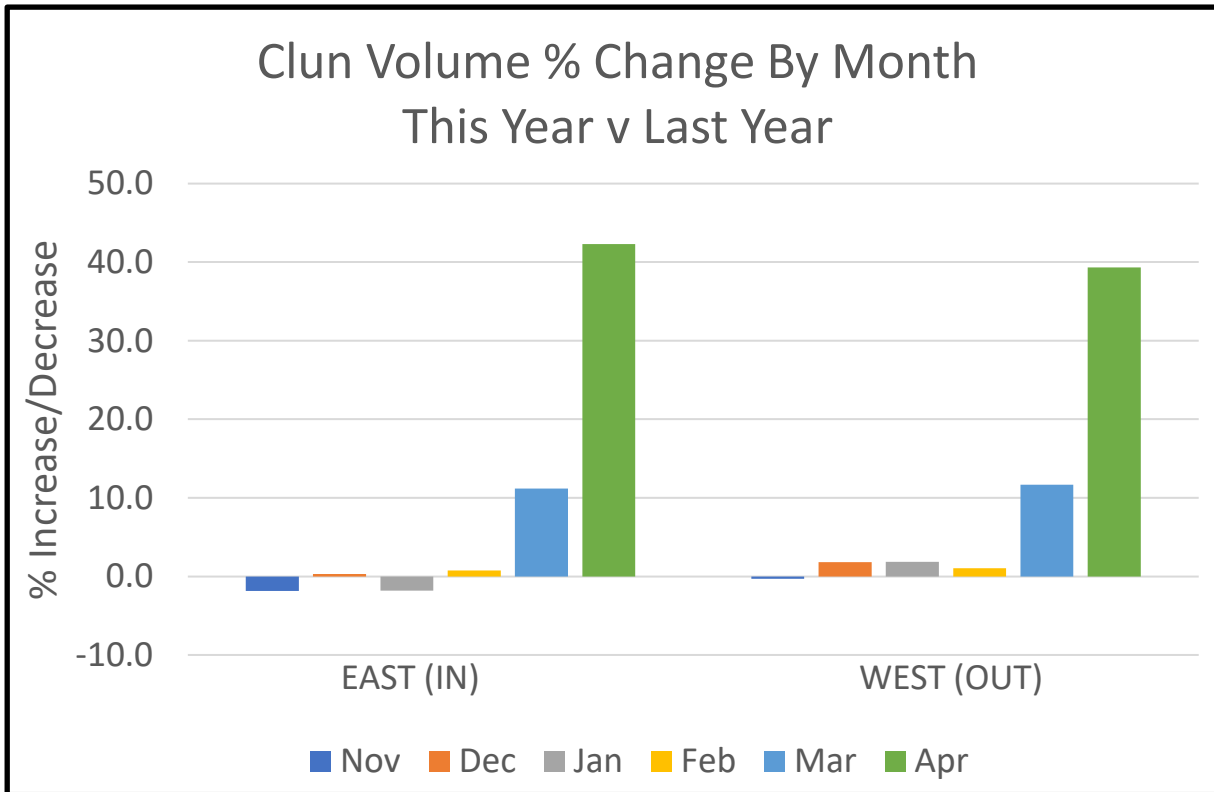
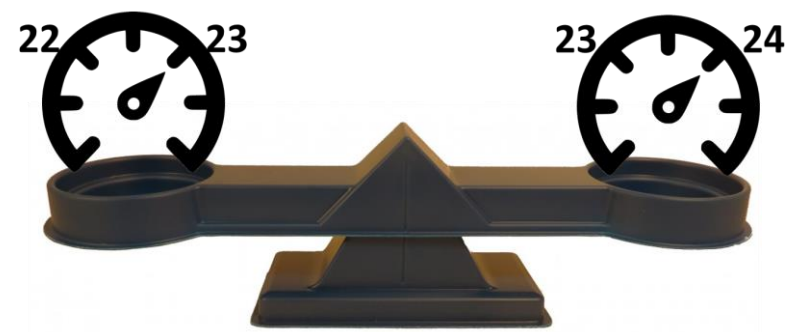
C. ARMS

TO

+11.3%

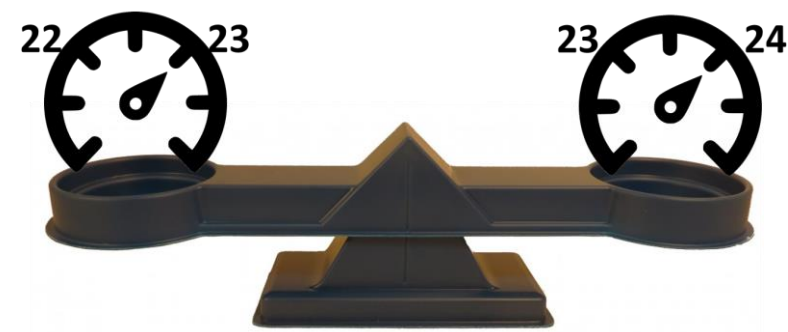
But there are lies, damn lies, and statistics...

# Traffic Volume Percentage Increase By Month TY v LY



**Apr/Mar figures account for overall volume increases**

# Overall Average Traffic Speeds TY v LY In mph



## GOING WEST

## GOING EAST

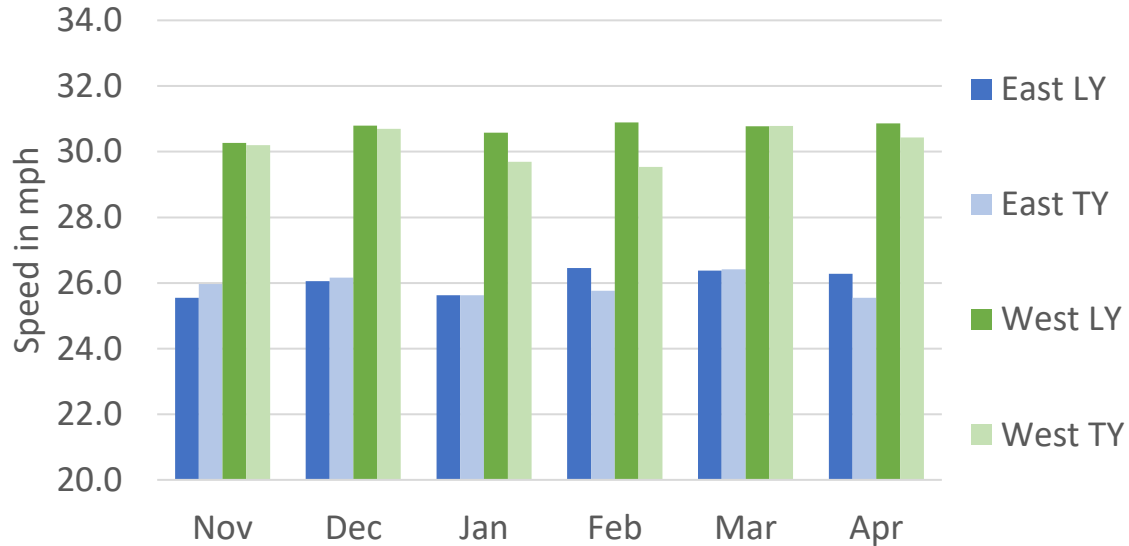
TY	LY	DIFF	SIDE	TY	LY	DIFF
25.9	26.1	-0.2	TO CLUN FROM	30.3	30.7	-0.4
33.1	33.1	0.0	FROM C. ARMS TO	29.6	29.5	+0.1

No significant overall change, TY v LY

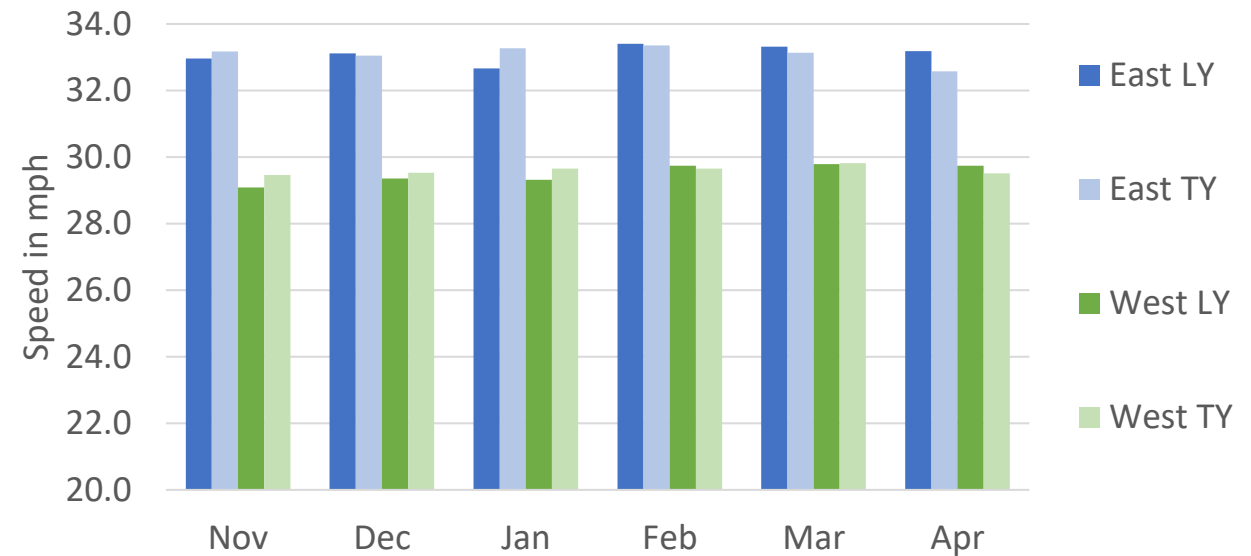
# Average Traffic Speeds By Month TY v LY



Clun Average Speeds By Month  
Last Year v This Year



Craven Arms Average Speeds By Month  
Last Year v This Year



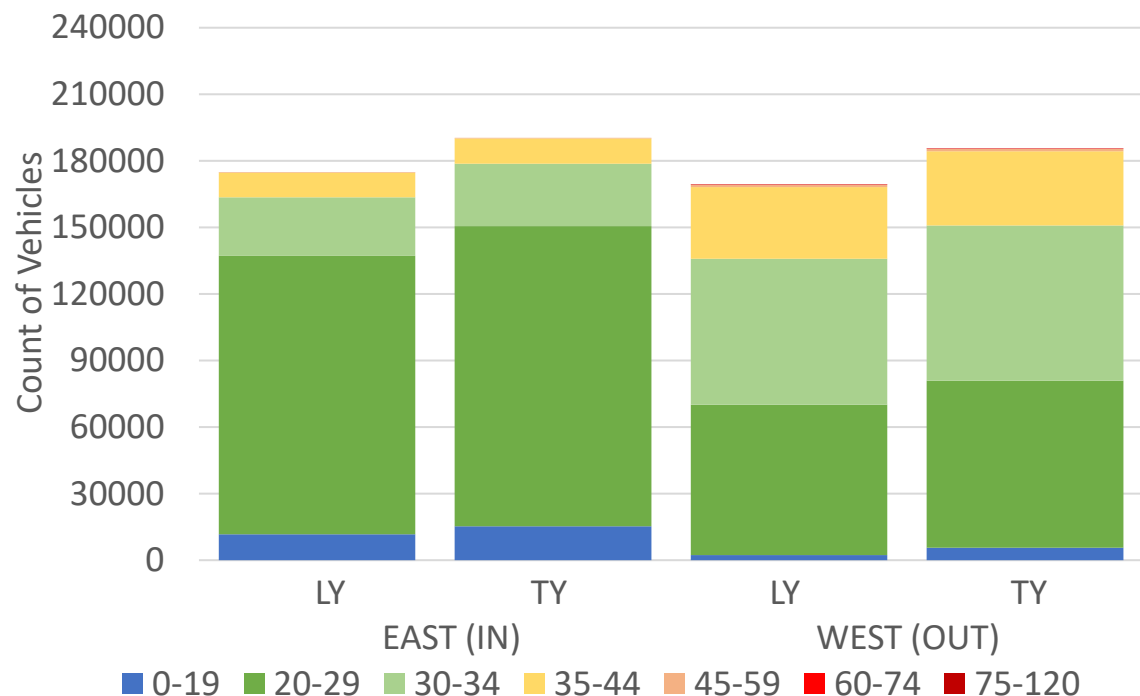
Very consistent across all months

# Traffic Counts By Speed Group

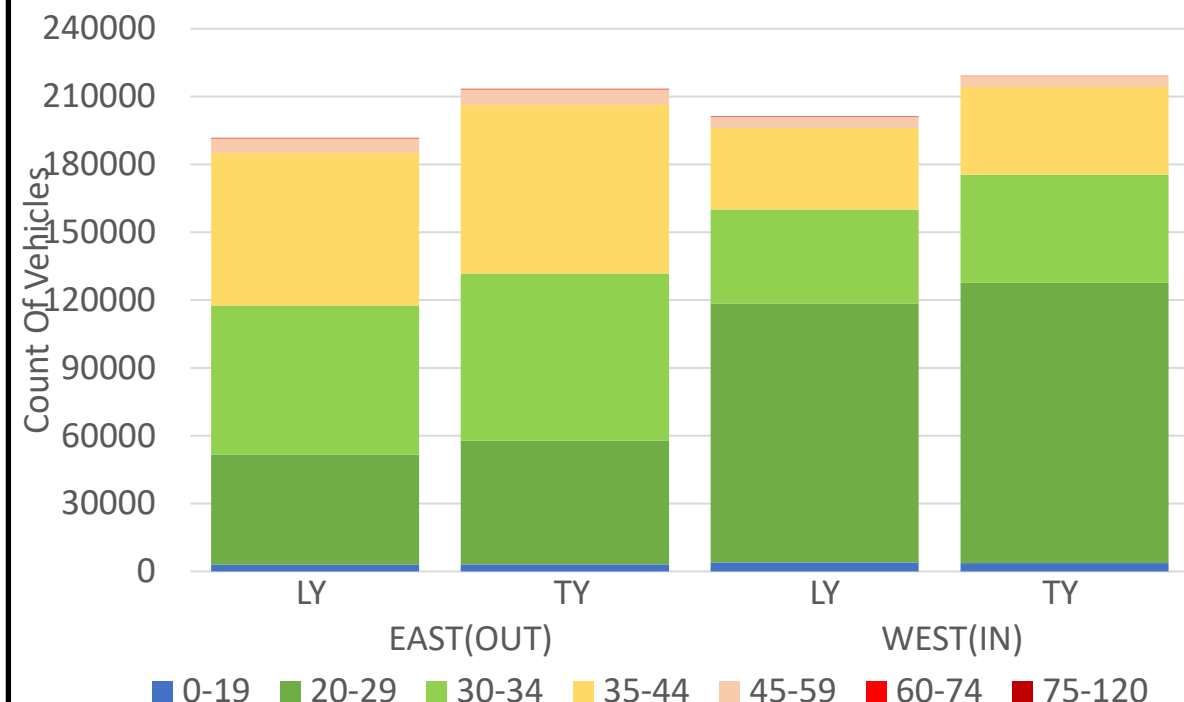
TY v LY



Clun Vehicle Count By Speed Group  
This Year V Last Year



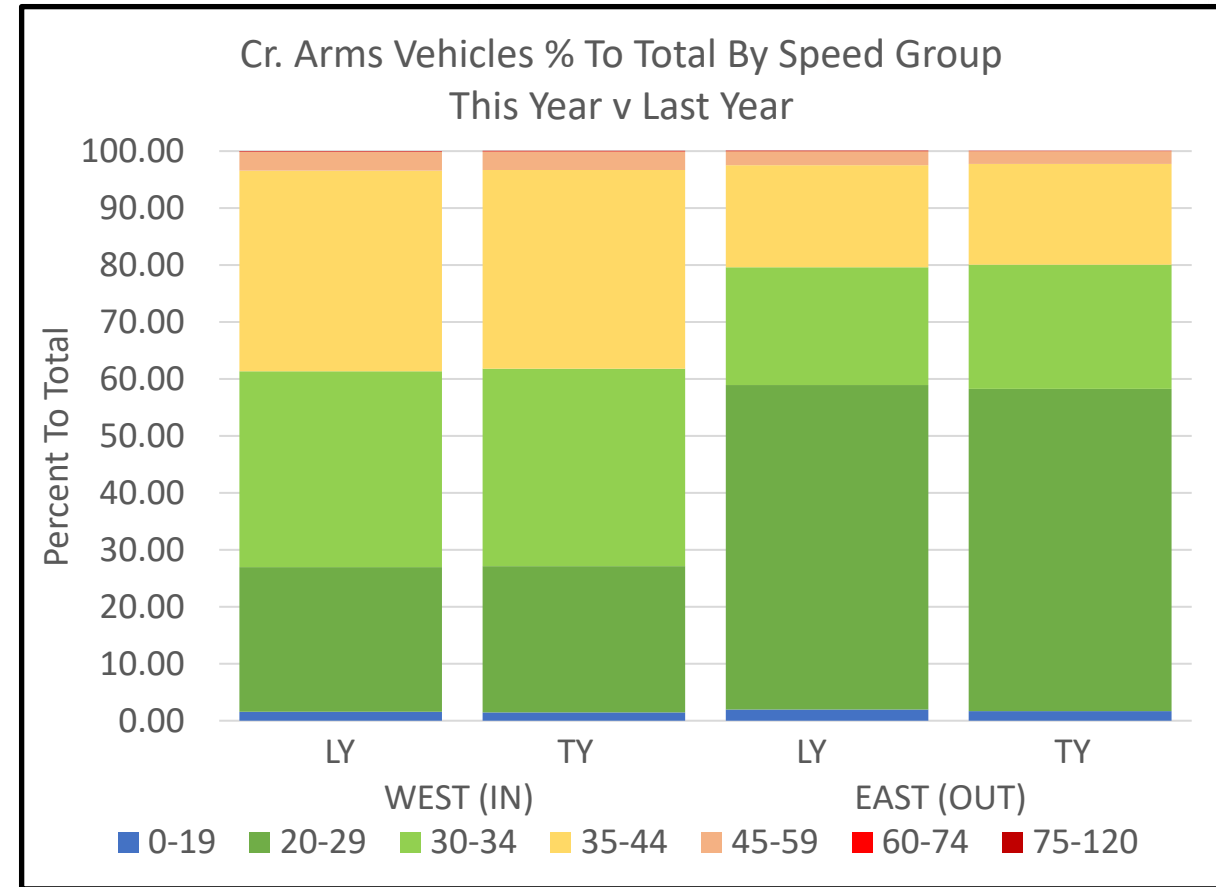
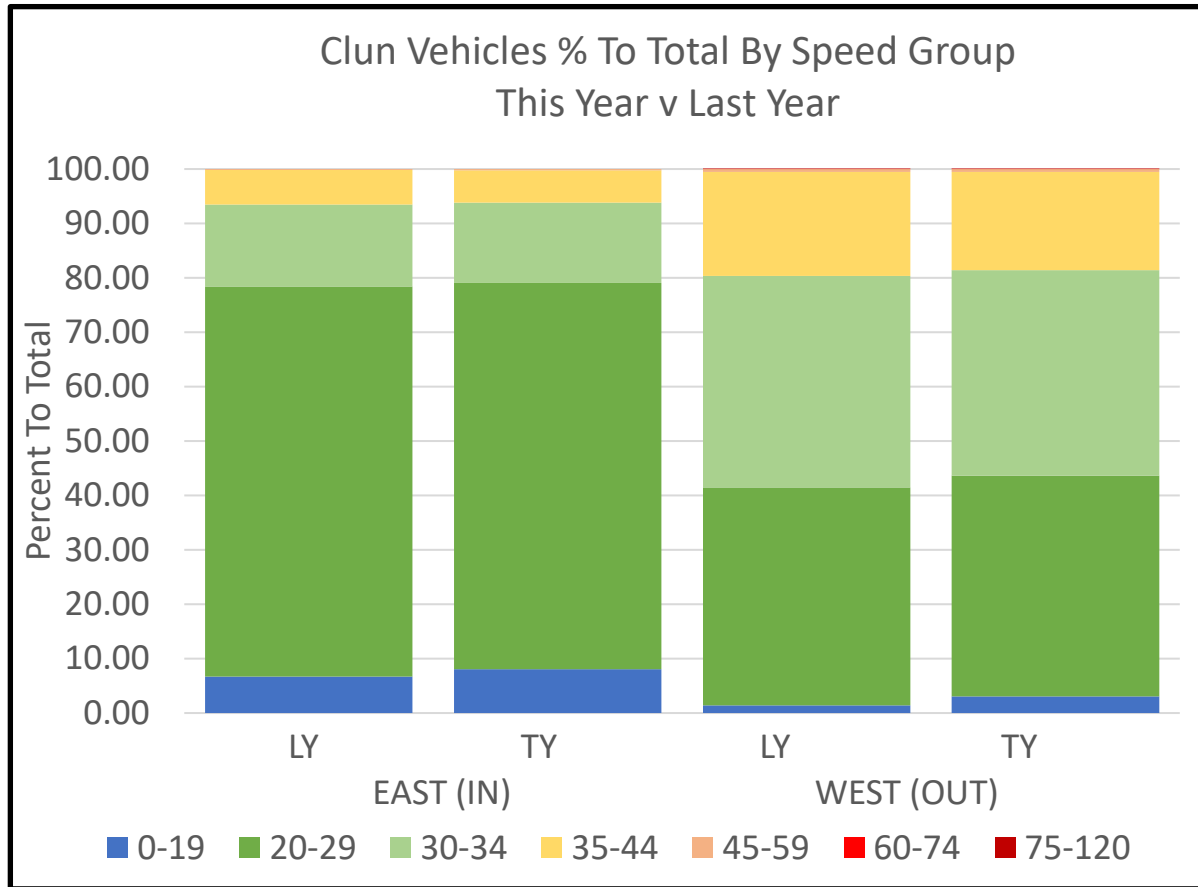
Craven Arms Vehicle Count By Speed Group  
This Year V Last Year



Majority of vehicles under 35mph

# Traffic Counts By Speed Group

## As % To Total TY v LY



More vehicles TY but % to totals remain the same

# Finally, The Big Picture – Nov 23 to Apr 24

CLUN SIDE		MEASUREMENT	CR ARMS SIDE	
INCOMING (EAST)	OUTGOING (WEST)		INCOMING (WEST)	OUTGOING (EAST)
190433	185308	TOTAL VEHICLES	219166	213373
25.9	30.3	AVERAGE SPEEDS (mph)	29.6	33.1
15313	5691	SPEED 0-19mph	3664	3109
135249	75181	SPEED 20-29mph	123987	54767
28067	70026	SPEED 30-34mph	47824	73920
<b>93.8%</b>	<b>81.4%</b>	<b>UNDER 35mph % to TOTAL</b>	<b>80.1%</b>	<b>61.8%</b>
11392	33402	SPEED 35-44mph	38722	74489
412	997	SPEED 45-59mph	4890	6903
0	5	SPEED 60-74mph	79	111
0	6	SPEED 75-120mph	0	74
<b>59</b>	<b>115</b>	<b>FASTEST SPEED (mph)</b>	<b>73</b>	<b>102</b>